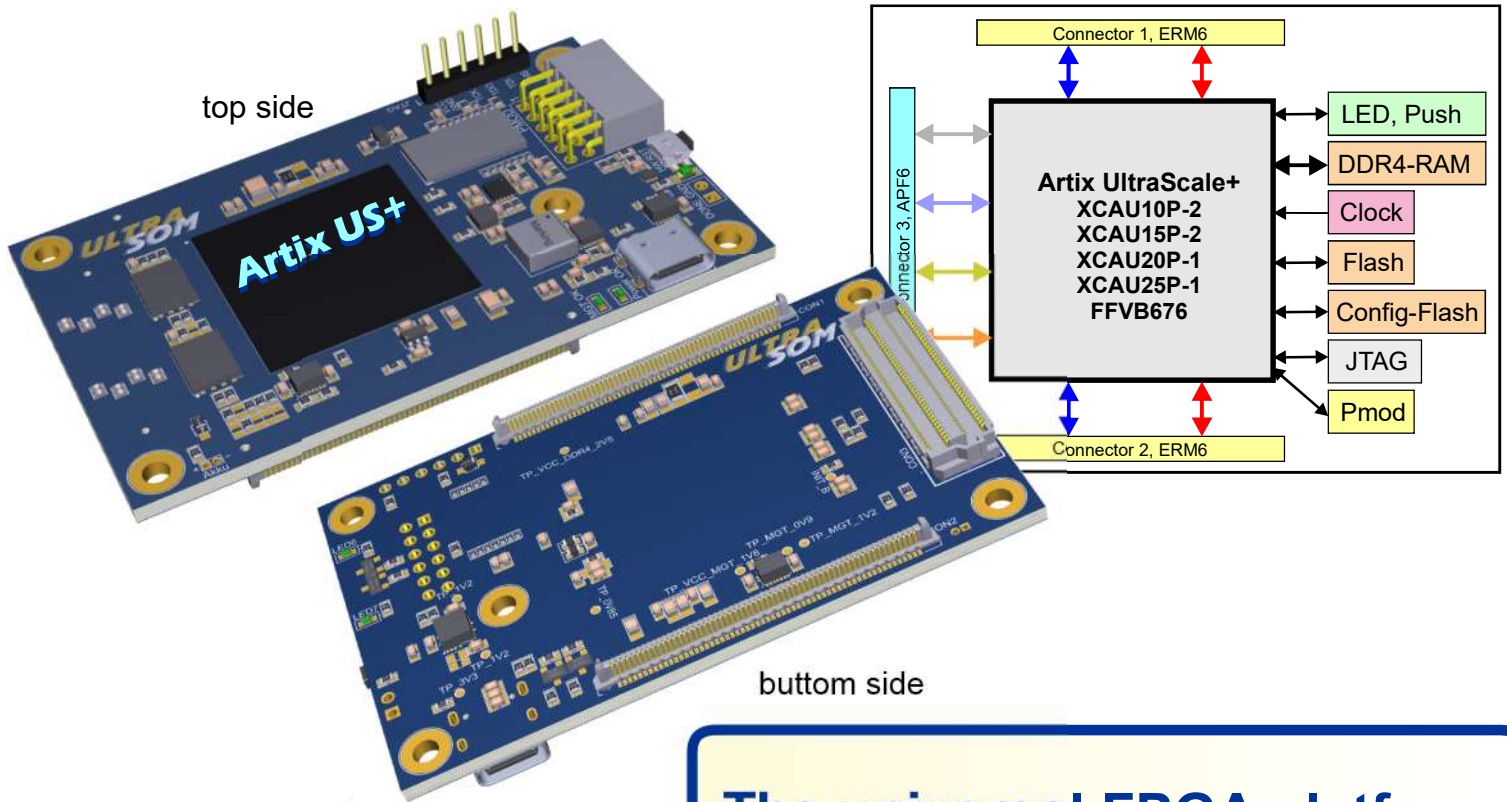


## Artix UltraScale+ SOM for development and series products



### The universal FPGA platform

- ⇒ **SOM** for development and series products
- ⇒ Latest cost-optimized Artix UltraScale+ architecture
- ⇒ Up to **220 GPIOs** (max. 148 HP, 64 HD, 8 Pmod IOs)
- ⇒ **Scalable** FPGA selection (96 000 ... 308 000 system logic cells)
- ⇒ 12 Gigabit-Transceiver **up to 16 Gbit/s**
- ⇒ PCI Express **Gen3** and **Gen4** support
- ⇒ 2500 Mbit/s **MIPI** support
- ⇒ **DDR4-RAM** 2400 Mbit/s onboard
- ⇒ **2x 128 Mbit** SPI-Flash onboard (config and general purpose)
- ⇒ **Small SOM** board size (80 mm x 50 mm)

#### Options:

- ⇒ Base board examples available
- ⇒ UltraSOM also as Kintex UltraScale+ available on same SOM board size

**MADE IN GERMANY**

## Ordering informations

# UltraSOM - Axx - 01 - 01

System On Module  
Ultrascale+

Aritix US+ type  
10: XCAU10P-FPGA  
15: XCAU15P-FPGA  
20: XCAU20P-FPGA  
25: XCAU25P-FPGA

Version  
01: Version 01

Additional  
01: with all accessories  
02: with power supply  
03: without accessories

Example: UltraSOM-A20-01-03

## Technical Specifications

FPGA	AU10P-2	AU15P-2	AU20P-1	AU25P-1
System Logic Cells (k)	96	170	238	308
CLB Flip-Flop (k)	88	156	218	282
CLB LUTs (k)	44	78	109	141
Dist. RAM (Mb)	1,0	2.5	3.2	4.7
Total Block RAM (Mb)	3,5	5.1	7.0	10.5
36k Block RAM Blocks	100	144	200	300
Clock Management Tiles (CMTs)	3	3	3	4
DSP Slices	400	576	900	1200
PCI Express	Gen4 x4, Gen3 x8	Gen4 x4, Gen3 x8	Gen 3 x8	Gen 3 x8
Transceivers	12 GTH	12 GTH	12 GTY	12 GTY
<b>Connectors</b>				
Connector 1	48 HD / 0 HP	48 HD / 0 HP	48 HD / 0 HP	48 HD / 52 HP
Connector 2	16 HD / 96 HP	16 HD / 96 HP	16 HD / 96 HP	16 HD / 96 HP
Connector 3	12 GTH	12 GTH	12 GTY	12 GTY
<b>On-board</b>				
RAM	DDR4-2400, 16 bit data, 38.4 Gb/s			
Flash	128 Mb Config Flash + 128 Mb Custom Flash			
Clock	200 MHz LVDS			
Connector type on SOM	2x ERM6-60-01.5-L-DV-A-K, 1x APF6-040-03.5-L-04-2-A			
Connector type on base board	2x ERF6-60-03.5-L-DV-A-K, 1x APM6-040-01.5-L-04-2-A			
<b>Electrical Specifications</b>				
Power supply (ext. conn. or ERM6)	5 V DC			
max. power	15 W			
<b>Dimensions</b>				
Length	80 mm			
Width	50 mm			
Height	tbd			
Weight	tbd			

## Contact

AVT GmbH Automatisierungs- und Verfahrenstechnik • Am Hammergrund 1 • 98693 Ilmenau • Germany  
Tel: +49 (0)3677 6479-56 • Web: [www.avt-ilmenau.de](http://www.avt-ilmenau.de) • Mail: [info@avt-ilmenau.de](mailto:info@avt-ilmenau.de)

senTec Elektronik GmbH • Robert-Bosch-Ring 2 • 98693 Ilmenau • Germany  
Tel: +49 (0)3677 68937-0 • Web: [www.sentec-elektronik.de](http://www.sentec-elektronik.de) • Mail: [info@sentec-elektronik.de](mailto:info@sentec-elektronik.de)

Subject to errors and changes.

